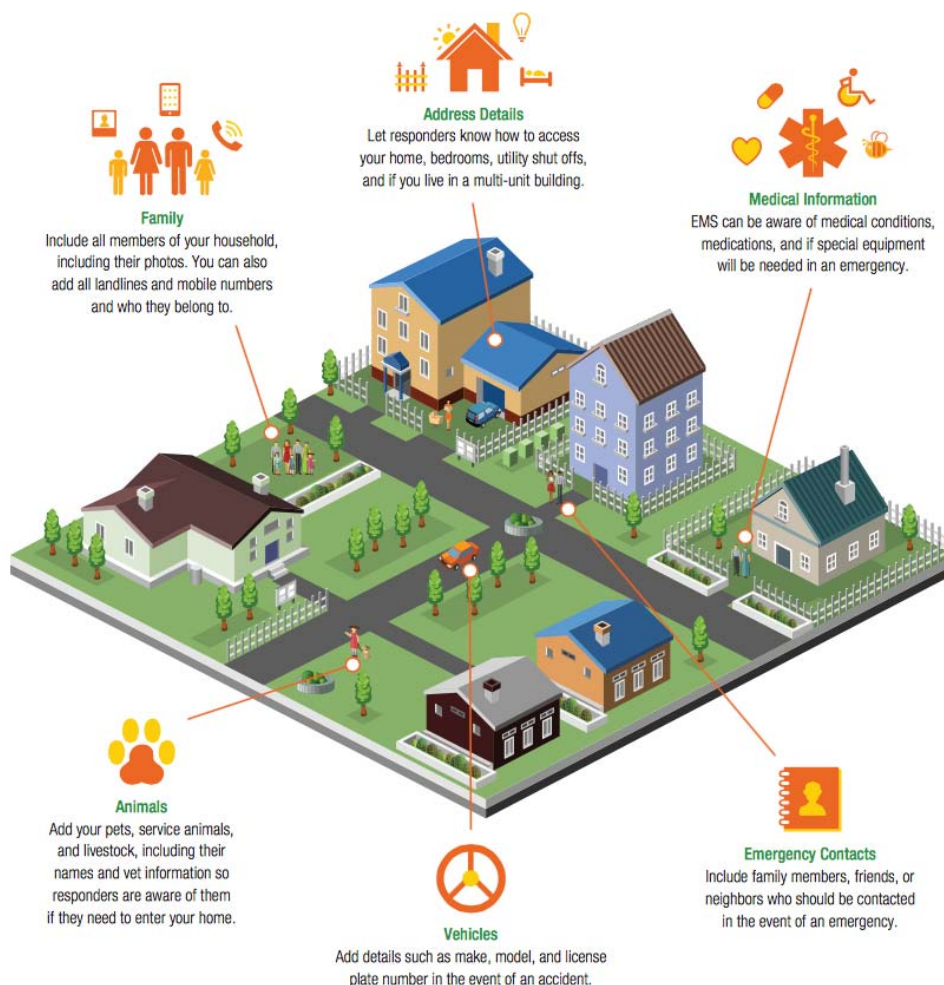


Have you signed up for Smart911?

What Can My Smart911 Safety Profile Include?



www.Smart911.com

You can also select Emergency Alerts!

Some of the emergency alerts you can opt-in to receive are: weather, traffic, missing persons, law enforcement, & fire

Need help setting up your account? Give us a call anytime or visit us on these days from 9am – 2pm:

Pike County EMA: 566-8272

Pike County 911: 670-6600

Goshen: 2nd Tues of each month (Town Hall)

Banks: 2nd Wed of each month (Town Hall)

Brundidge: 1st Thurs of each month (old Dr. Goldman Office on Gilmore Rd.)

www.pikecounty911.org
www.facebook.com/pikecounty911/

[@ALPikeEMA on Twitter](https://twitter.com/ALPikeEMA)
www.facebook.com/PikeCoEMA/

How it Works:



Sign Up for Smart911
and create a secure Safety Profile for your household.



If you ever call 9-1-1,
the call taker can see the emergency information you want them to see.



Emergency Responders
can then use this key information to help you faster and more efficiently.

Emergency Alerts:

When you create a Smart911 account, you will be able to select to receive which emergency alerts you would like to receive and how you would like to receive them (email, phone, text).

Everyone who creates an account is automatically signed up to receive Tornado Warnings.

Security and Privacy:



You Decide What to Include

Provide as much or as little information as you want. Smart911 only asks for information that is relevant to aid emergency response.



Industry Leading Security

Your information is housed in top-tier secure facilities complete with 24/7 physical security, video surveillance, and alarms. We utilize the same SSL certificate authority and encryption technologies used by leading financial institutions.



Only Seen If You Call 9-1-1

Your information is only available to 9-1-1 call takers and first responders if you have an emergency.



Plan Ahead for Any Emergency

Sign up for Smart911 so first responders will be aware of important information to help you when you call 9-1-1.



Pike County EMA: 566-8272

Pike County 911: 670-6600